

# NOMAD FRONT COOKING UNIT with extraction system MODEL S-KMU-2



VIANEN Powered by Dutch technology



ELECTRA



## APPLICATION

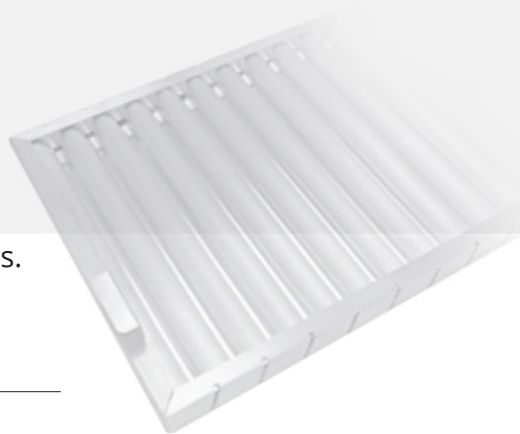
The mobile front cooking unit for professional use provides the ideal solution when cooking in front of audiences in places such as show cooking at exhibitions and catering for parties. Deep frying, grilling, steaming are just a few of the endless applications for the S-KMU-2 unit.

An integrated extraction system is built into the system, reducing the odours and capturing the grease and fumes.

## FECON FILTER

The flame retardant Fecon filters provide safety as the flash flames do not pass the filters.

The Model S-KMU-2 provides place for maximum 2 table top cooking units. The design of the S-KMU-2 allows for good visibility from both sides of the unit for presentation purposes. The air stream supply is introduced from the rear of the unit so that the heat is directed to the lter bank.



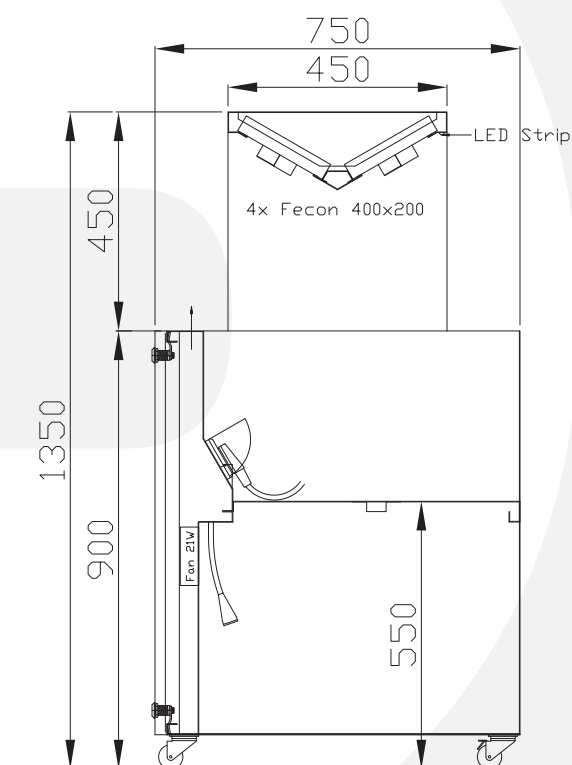
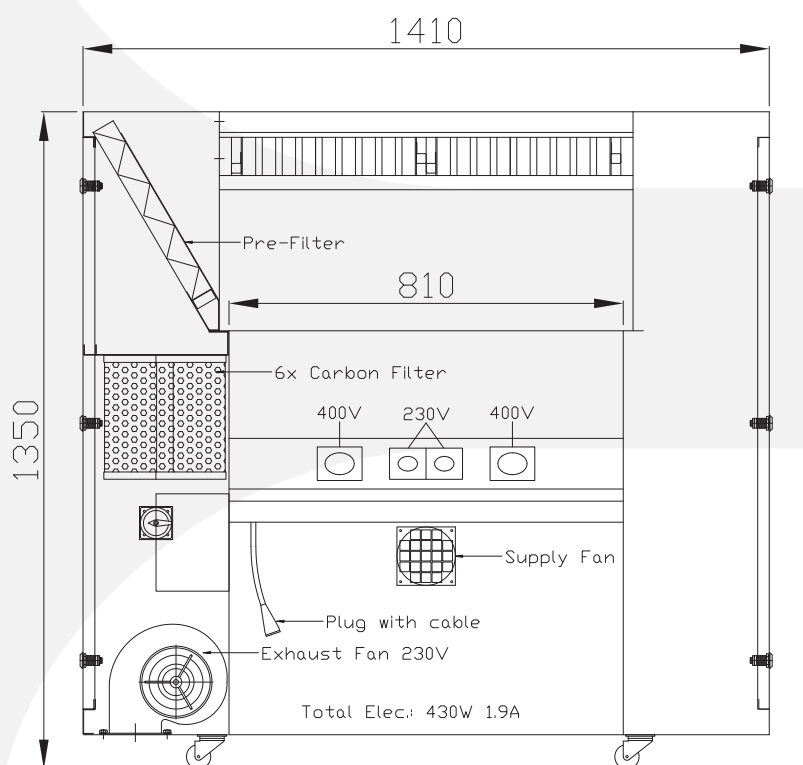
## OPTIONS

Collapsible shelves for additional storage/workspace.  
Front cover plate.

## TECHNICAL DETAILS MODEL S-KMU-2

- |        |   |
|--------|---|
| 2 nos. | Exhaust fan 230V – 50Hz                   |
| 1 nos. | Supply fan 230V – 50Hz                    |
| 4 nos. | Fecon filters dimensions 400 x 200 x 36mm |
| 6 nos. | Carbon filters                            |
| 1 nos. | Pre-filter                                |
| 2 nos. | Electrical connections 230V               |
| 2 nos. | Electrical connections 400V               |

- |        |                             |
|--------|-----------------------------|
| 1 nos. | Plug with cable 400V – 50Hz |
| 2 nos. | Removable inspection panels |
| 4 nos. | Castors – 2 with brakes     |
| 1 nos. | Switch board 400V x 230V    |
| 1 nos. | LED strip lighting 5 Watt   |



info@sss-india.in

www.sss-india.in

Tel: +91.8028454582

Southern Stainless Steel Fabrication India Pvt Ltd

Unit #G-8 Shreno Ltd. Campus

Near Railway Station Whitefield

Bangalore - 560066 India