

Front Cooking Unit GF2



Stainless steel Front Cooking Unit with the standard dimensions 990 x 700 x 1160mm. (Optional – the dimension can altered to meet specific customer requirements.)

The unit is fabricated from stainless steel, all joints are welded and exposed surfaces are made of double sided, satin finish, stainless steel 304 (DIN 1.4301, grit 320). The sheet thickness is 1,25mm. The unit is mounted on 4 wheels with ball bearings.

The unit consists of:

- 1 no. Exhaust fan 230V – 50 Hz;
- 2 nos. Fecon filters 400 x 200 x 36mm;
- 2 nos. Carbon filters 377 x 300 x 40mm; 1 no. Grease tray;
- 3 nos. Connections 230V;
- 1 no. Drawer with rails for 1/1 GN max. 200mm deep;
- 4 nos. 1/8 GN
- 1 no. Plug with cable (1000mm) 400V – 50 Hz;
- 2 nos. Removable inspection panels;
- 4 nos. Wheels with ball bearings, two are static and two with brakes;
- 1 no. Switch board 400V > 3 x 230V;
- 2 nos. Protection glass.

info@sss-india.in

www.sss-india.in

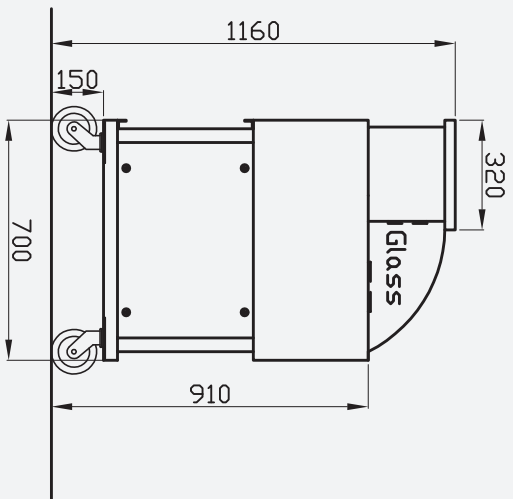
Tel: +91.8028454582

Southern Stainless Steel Fabrication India Pvt Ltd

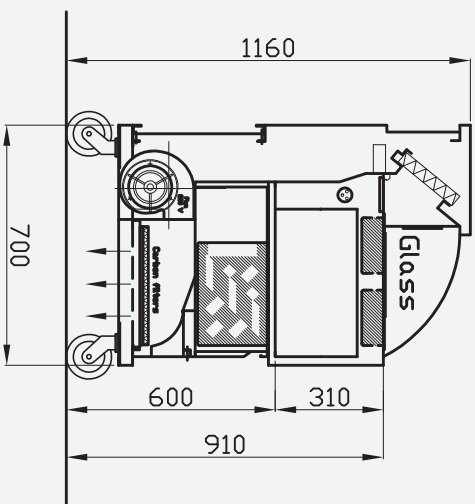
Unit #G-8 Shreno Ltd. Campus

Near Railway Station Whitefield

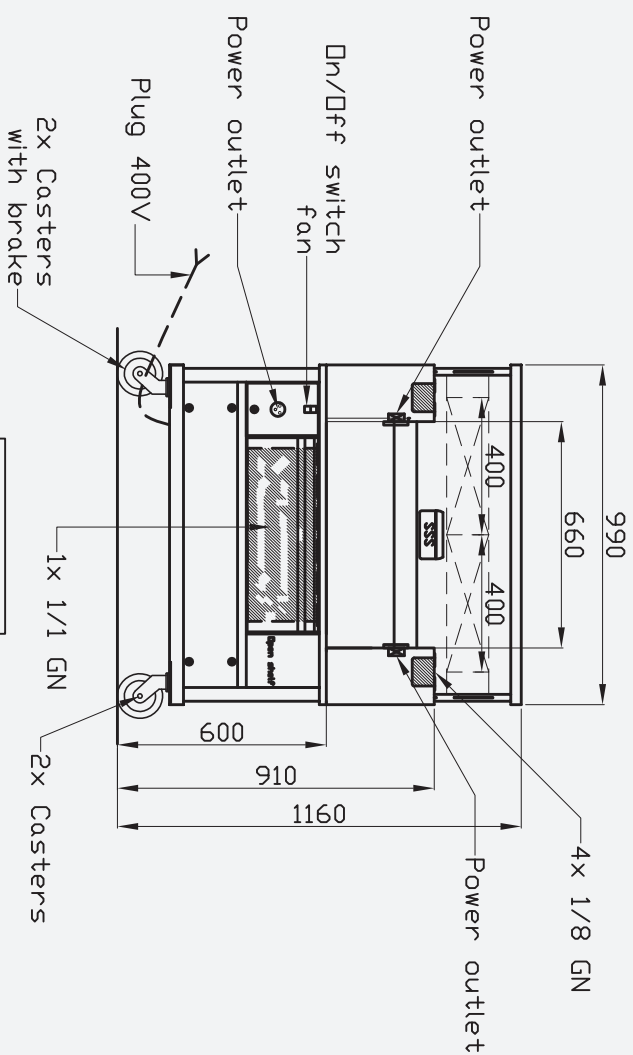
Bangalore - 560066 India



Side view



Section



Front view

Front-Cooking

- 2* Fecon filter 400x200x36mm
- 2* Carbon filter 377x300x40mm
- 1* 1/1 GN
- 4* 1/8 GN
- 1* Fan 230V

Front cooking GF2

Draw.Title: Front cooking

Rev.	Date	Description	Draw. Chk.
0	10-05-2012	Original version	YV
1			
2			
3			
4			
5			
6			

Drawing No.

Front cooking

Project no.

Front cooking



SOUTHERN STAINLESS STEEL FABRICATION INDIA

Unit #5-8 Sireno Ltd Campus - Whitefield - Bangalore - 560066
Tel: +91 80 28454582 Email: info@indasss.com

Website: www.sss-india.in

Scale: 1:15

Size: A3