

## ADVANTAGES

- Provides a high standard of hygiene
- Welded stainless steel construction
- Incorporates full perimeter condensation channel
- Easy to install

## V-ADV CONDENSE CANOPY

Proper ventilation of the workplace removes unpleasant smells, excessive heat, smoke, fumes, moisture and dust build-up preventing stagnation of the air. Vianen ADV canopy provides an efficient solution for the adequate ventilation for your kitchen.

### APPLICATION

Suitable for all types of commercial dishwashing machines whether wall mounted or in an island arrangement. The ADV canopy provides a relatively large buffer zone to capture the vapours.

### DESIGN AND CONSTRUCTION

Vianen designs and produces custom canopy according to the specific requirements of the client. The canopy is fabricated from 1.0 – 1.2mm thick type 304 stainless steel. All visible surfaces are ultra- fine grain polished (320 grit) and polythene protected. The canopy is cut, punched, folded and factory assembled by seam welds and non-visible mechanical fixings. The canopy can be produced in seamless sections up to 6 meters in length. Joints are provided with internal cover-plates so that no joints or mechanical fixings are visible.

All metal edges are rolled smooth and are free from sharp edges and projections. The canopy lower edge is formed into a full perimeter condensation channel with inclined internal elevation to simplify cleaning and the inner edges are crush folded for safety purposes. Fitted directly under the duct spigot is a removable condensation plate. Drains in the gutter are optional. The canopy has a constant exhaust pressure drop of 40 Pa.

### OPTIONAL

## V-CLIX LOW ENERGY LUMINAIRE

The Vianen V-CLIX luminaire is specially designed for use in the Vianen canopies and ceiling systems for the professional kitchen. The modern and sleek design of the V-CLIX allows for easy maintenance. The lighting level of 500 lux at working height is standard.

### CONSTRUCTION

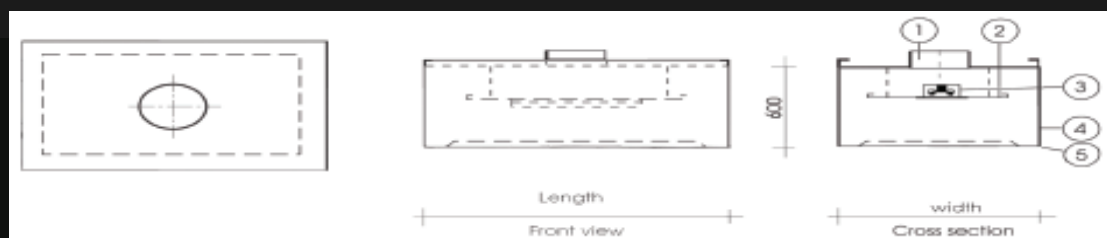
The Vianen V-CLIX luminaire is designed with an anodized aluminium frame to dissipate the heat. The luminaire has an integrated, tempered and clear glass panel. A driver is mounted on top of the LED panel, which is connected to the 230V connection box.

### INSTALLATION

Hanging brackets are fitted on top of the corners of the canopy for easy installation.

## V-ADV – CROSS SECTION

- |                  |                                    |                                    |
|------------------|------------------------------------|------------------------------------|
| 1. Duct spigot   | 2. Condensation plate              | 3. V-CLIX light fitting (Optional) |
| 4. Welded joints | 5. Full perimeter condense channel |                                    |



#### Disclaimer

Vianen has compiled this brochure for informational purposes only. The actual product may differ from the specifications in this brochure.

Vianen KVS B.V.  
Finse Golf 18, 3446 CK Woerden  
P.O. Box 163, 3440 AD Woerden, Holland

[www.vianenkvs.com](http://www.vianenkvs.com)  
Tel.: (+31) 348 - 41 63 00  
[info@vianenkvs.nl](mailto:info@vianenkvs.nl)

  
**VIANEN**  
KITCHEN VENTILATION